



Life Enrichment Center

Adult Day Care & Health Service

704.739.4858 (Kings Mountain) 704.484.0405 (Shelby)

www.LifeEnrichmentCenter.org

April 2021

Serving Veterans Since 1980

Did you know that veterans may be eligible for benefits that cover the cost of services provided by Life Enrichment Adult Day Care?

**Call
Today to
schedule
a FREE
visit!**

*Retired Army Veteran,
Jessie Hopper,
plays guitar for
other veterans while
attending LEC.*

Shelby 704.484.0405 Kings Mountain 704.739.4858

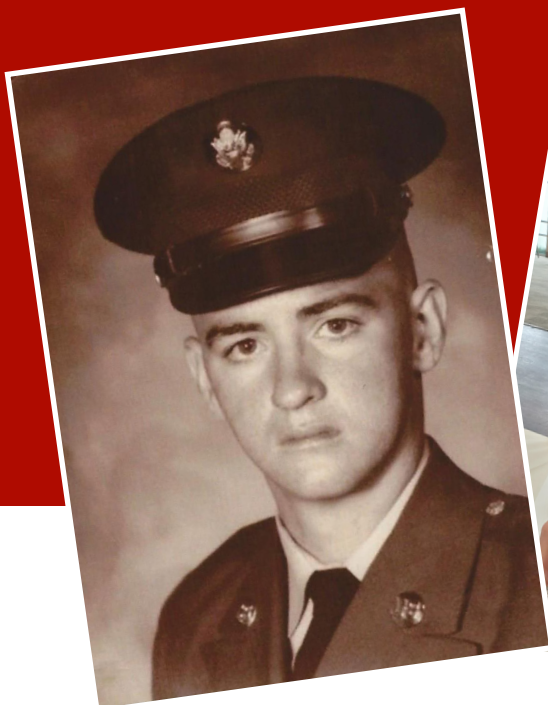
*For 40 years doing "Whatever It Takes" to help families keep adult loved ones at home and in the community.
Life Enrichment Center is designated a national model among adult day cares across the country.*

*Retired Army Veteran,
Johnny, plays a harmonica duet with Music
Therapist, Hannah Coleman.*



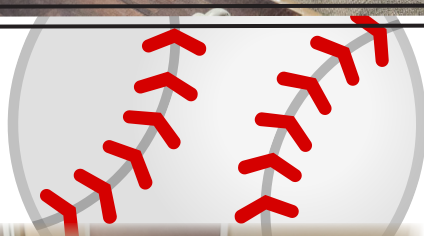
Every Day Is Veterans Day At Life Enrichment!

LEC Adult Day Care provides veterans opportunities to socialize with other veterans. Other benefits include meaningful activities, personal care, nutritious meals, and top notch healthcare.



*Retired Army Veteran,
Wayne, served four years in
the United States Military.
He now enjoys spending time
with his fellow
veterans sharing stories,
woodworking, and reading the
morning paper
along with a hot cup of
coffee!*

Take Me Out To The Ball Game!!

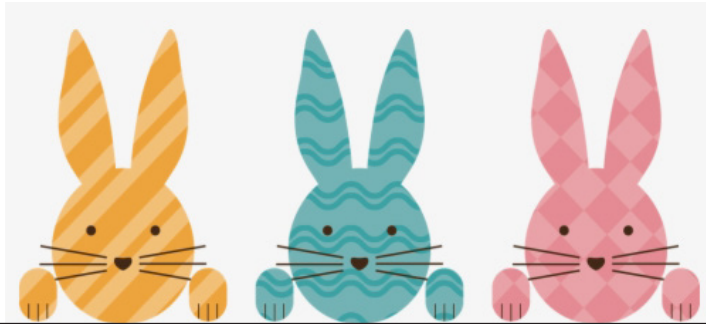


Who says exercise can't be fun? Pictured above, Army Veteran Johnny, hits a home run during an indoor baseball game! When he wasn't up to bat, he helped other participants as they rounded the bases. (Left) Air Force Veteran, John, cheered from the "dugout".

Life Enrichment Center
110 Life Enrichment Blvd.
Shelby, NC 28150
704.484.0405

APRIL

Shelby Activity Highlights



<p><i>1 Thursday</i></p> <ul style="list-style-type: none">◆Chair Yoga Exercise◆Royal Air Force Anniversary◆Spring Time Scavenger Hunt <p><i>Horticultural Therapy</i>  <i>with Debra</i></p> <p><i>Pinto Beans-Coleslaw</i> <i>Cornbread-Peaches</i></p>	<p><i>2 Friday</i></p> <p>CLOSED FOR GOOD FRIDAY</p>
<p><i>8 Thursday</i></p> <ul style="list-style-type: none">◆History Of The Masters◆Pennies Worth Of Candy<ul style="list-style-type: none">◆Remembering Henry "Hank" Aaron◆Weights On The Eights <p> <i>Music Therapy with Hannah</i></p> <p><i>Sloppy Joes-Tater Tots-Red Beans</i> <i>Pineapple</i></p>	<p><i>9 Friday</i></p> <ul style="list-style-type: none">◆The Day The Civil War Ended<ul style="list-style-type: none">◆All About Hawks◆History Of The Charlotte Hornets <p><i>Horticultural Therapy</i>  <i>with Debra</i></p> <p><i>Broccoli Cheddar Soup-Turkey Sandwich- Applesauce</i></p>
<p><i>15 Thursday</i></p> <ul style="list-style-type: none">◆Cosby Show Trivia◆Recognizing Jackie Robinson◆Name The Meal From McDonald's <p><i>Horticultural Therapy</i>  <i>with Debra</i></p> <p><i>Chicken Sandwich-Baked Fries- Green Beans-Mixed Fruit</i></p>	<p><i>16 Friday</i></p> <ul style="list-style-type: none">◆Full House Trivia◆Patio Dance Party! <p>Pajama Day!</p> <p> <i>Music Therapy with Hannah</i></p> <p><i>Pork Tenderloin-Sweet Potato Casserole- Black Eyed Peas-Roll-Peaches</i></p>
<p><i>22 Thursday</i></p> <ul style="list-style-type: none">◆Celebrating Earth Day◆LEC Wheelchair Races◆Outdoor Egg Toss  <p> <i>Music Therapy with Hannah</i></p> <p><i>Chicken & Dumplings-Peas & Carrots- Roll-Pears</i></p>	<p><i>23 Friday</i></p> <p>Fun Day Friday</p>  <p><i>Horticultural Therapy</i>  <i>with Debra</i></p> <p><i>Corned Beef-Cabbage-Red Potatoes- Roll-Pineapple</i></p>
<p><i>29 Thursday</i></p> <ul style="list-style-type: none">◆Willie Nelson Trivia◆"Name That Tune" Willie Nelson Edition◆Song Writing Contest <p><i>Horticultural Therapy</i>  <i>with Debra</i></p> <p><i>Vegetable Beef Soup-Garden Salad- Roll-Pears</i></p>	<p><i>30 Friday</i></p> <ul style="list-style-type: none">◆Pennies Worth Of Candy◆Reminiscing About Childhood Toys <p> <i>Music Therapy with Hannah</i></p> <p><i>BLT on Wheat-Beets- Macaroni Salad-Pineapple</i></p>

APRIL

KINGS MOUNTAIN ACTIVITY HIGHLIGHTS



Neisler Center

by the Neisler Foundation
222 Kings Mountain Blvd.
Kings Mountain, NC 28086
704-739-4858

<div>ACTIVITY HIGHLIGHTS</div> <div></div>			<div>1 Thursday</div> <div>♦Participant Council Meeting</div> <div>♦"Opening Day Of Baseball" Party</div> <div>♦Easter Egg Collage</div> <div>♦Spa Day & Health Fair</div> <div>🎵 Music Therapy with Hannah</div> <div>Pinto Beans-Coleslaw</div> <div>Cornbread-Peaches</div>		<div>2 Friday</div> <div>Closed For Good Friday</div>				
<div>5 Monday</div> <div>♦Making Spring Clay Sculptures</div> <div>♦Indoor Volleyball</div> <div>♦Arm Chair Travel To Hawaii</div> <div>🎵 Music Therapy with Hannah</div> <div>Lasagna- Garden Salad- Garlic Toast- Pears</div>		<div>6 Tuesday</div> <div>♦"Spring Time" Reminiscing</div> <div>♦Seated Soccer Game</div> <div>♦Making Coffee Filter Butterflies</div> <div></div> <div>🎵 Music Therapy with Hannah</div> <div>Grilled Chicken- Scalloped Potatoes- Brussel Sprouts-Roll-Mixed Fruit</div>		<div>7 Wednesday</div> <div>♦Overhead Session "Walk Down Memory Lane"</div> <div>♦Parachute Fun</div> <div>♦LEC Monopoly</div> <div>Horticultural Therapy with Debra</div> <div>Tomato Soup-Grilled Cheese Sandwich- Okra-Mandarin Oranges</div>		<div>8 Thursday</div> <div>♦"Trivia" Exercise</div> <div>♦Let's Play "Captain's Orders"</div> <div>Spa Day & Health Fair</div> <div>Horticultural Therapy with Debra</div> <div>Sloppy Joes-Tater Tots-Red Beans Pineapple</div>		<div>9 Friday</div> <div>♦"Good Morning" Karaoke</div> <div>♦Dance Party Exercise</div> <div>♦Musical Statue Game</div> <div>🎵 Music Therapy with Hannah</div> <div>Broccoli Cheddar Soup-Turkey Sandwich- Applesauce</div>	
<div>12 Monday</div> <div>♦Hula Hoop Contest</div> <div>♦Let's Play "Sock It To Me"</div> <div>♦Spring Time Nature Walk</div> <div>Horticultural Therapy with Debra</div> <div>Ham Sandwich-Three Cheese Potato Soup- Pineapple</div>		<div>13 Tuesday</div> <div>♦Spa Day & Health Fair</div> <div>♦LEC Bowling</div> <div>♦Ladies Group Tea Party</div> <div>♦Men's Coffee Club</div> <div>Horticultural Therapy with Debra</div> <div>Chicken Enchiladas- Black Beans- Mexican Salad-Mandarin Oranges</div>		<div>14 Wednesday</div> <div>♦Overhead Session "Farm Work"</div> <div>♦Indoor Horseshoes</div> <div>♦Let's Go Magnetic Fishing Game</div> <div>🎵 Music Therapy with Hannah</div> <div>Loaded Baked Potato w/Chili, Cheese, Broccoli, & Sour Cream-Wheat Roll-Fruit Cocktail</div>		<div>15 Thursday</div> <div>♦T.V. Commercial Trivia</div> <div>♦LEC Cornhole</div> <div>♦"Pass The Ball" Trivia</div> <div></div> <div>🎵 Music Therapy with Hannah</div> <div>Chicken Sandwich-Baked Fries- Green Beans-Mixed Fruit</div>		<div>16 Friday</div> <div>♦LEC Bingo</div> <div>♦Zumba Exercise</div> <div>♦School Days Reminiscing</div> <div>Horticultural Therapy with Debra</div> <div>Pork Tenderloin-Sweet Potato Casserole- Black Eyed Peas-Roll-Peaches</div>	
<div>19 Monday</div> <div>♦"60's Candy" Trivia</div> <div>♦Tai Chi</div> <div>♦Ladies Group Flower Craft</div> <div>♦Men's Toolbox Activity</div> <div>🎵 Music Therapy with Hannah</div> <div>Hamburger Steak w/Gravy-Tater Tots- Green Beans-Roll-Applesauce</div>		<div>20 Tuesday</div> <div>♦LEC Alphabet Game</div> <div>♦Chair Yoga</div> <div>♦Let's Play Price Is Right</div> <div></div> <div>🎵 Music Therapy with Hannah</div> <div>Fish Sandwich-Coleslaw-Lima Beans- Peaches</div>		<div>21 Wednesday</div> <div>♦Painting To Music</div> <div>♦Plate Exercise</div> <div>♦Monthly Birthday Party</div> <div>♦Spa Day & Health fair</div> <div>Horticultural Therapy with Debra</div> <div>Swedish Meatballs Over Pasta-Caesar Sald- Garlic Bread-Oranges</div>		<div>22 Thursday</div> <div>♦Playdough Pictionary</div> <div>♦Pool Noodle Exercise</div> <div>♦Making Rain Sticks</div> <div>Horticultural Therapy with Debra</div> <div>Chicken & Dumplings-Peas & Carrots- Roll-Pears</div>		<div>23 Friday</div> <div>♦Board Game Bonanza</div> <div>♦LEC Cornhole</div> <div>♦Happy Birthday Shakespeare</div> <div>♦Shakespeare Skit Competition</div> <div>🎵 Music Therapy with Hannah</div> <div>Corned Beef-Cabbage-Red Potatoes- Roll-Pineapple</div>	
<div>26 Monday</div> <div>♦Spring Time Sing-a-Long</div> <div>♦LEC Relay Races</div> <div>♦Virtual Story Telling With Ann Gamble</div> <div>Horticultural Therapy with Debra</div> <div>Grilled Hamburgers-Baked Beans-Broccoli- Mandarin Oranges</div>		<div>27 Tuesday</div> <div>♦History Of Babe Ruth</div> <div>♦LEC Walking Club</div> <div>♦Ladies Group Scrapbooking</div> <div>♦Men's Group Sanding Project</div> <div>Horticultural Therapy with Debra</div> <div>Tomato Soup-Grilled Cheese Sandwich- Brussel Sprouts-Peaches</div>		<div>28 Wednesday</div> <div></div> <div>♦National Super Hero Day</div> <div>♦Super Hero Fashion Show</div> <div>♦Tai Chi</div> <div>🎵 Music Therapy with Hannah</div> <div>Smoked Sausage w/Sauerkraut- Lima Beans-Garlic Toast-Mixed Fruit</div>		<div>29 Thursday</div> <div>♦Getting Ready For The "LEC" Kentucky Derby</div> <div>♦Indoor Kickball</div> <div>♦Guess That Slogan</div> <div>🎵 Music Therapy with Hannah</div> <div>Vegetable Beef Soup-Garden Salad- Roll-Pears</div>		<div>30 Friday</div> <div>LEC 2021 Kentucky Derby</div> <div></div> <div>BLT on Wheat-Beets- Macaroni Salad- Pineapple</div>	

Did you know that the Neisler Center started an expansion and full renovation in November 2019? Many businesses were closed due to the COVID-19 pandemic but the renovations continued! Participants plan to transition to the new expansion at the end of April while renovations of the existing building take place. The anticipated completion date for the entire project will be late August of 2021...



Stay Tuned!!



Coming Soon!!



Your Gift Will Help Families Stay Together... Please Give.

Memorials, Honorariums, and Gifts

I want to support the work of the Life Enrichment Center...

By becoming a:

- ☐ Friend \$25-\$100
- ☐ Supporter \$101-\$500
- ☐ Sponsor \$501-\$1,000
- ☐ Patron \$1,001-\$2,500
- ☐ Benefactor \$2,501-\$4,999
- ☐ Major Benefactor \$5,000 +

Make checks payable to:

*Life Enrichment Center
110 Life Enrichment Blvd.
Shelby, NC 28150*

Name _____

Address _____

City _____ State _____ Zip _____

In memory of _____

In honor of _____

Send a notice to: _____

Address _____

City _____ State _____ Zip _____

You can also use your credit card, please call Patti at 704.484.0405 or fill out the following:

Visa/ MC (Circle one)



Card No. _____ Expiration Date _____

Amount _____ Signature _____

Security Code _____

Board of Directors

Dr. Carolyn Jackson, *President*
Russ Putnam, *Vice-President*
Evelyn Ribadeneyra, *Secretary*
Donna Beringer, *Treasurer*
Suzanne Amos
Dr. David Barker
Duncan Blount
Heather Bridges Moore
Tommy Brooks
Julie Bryan
Danny Clay
Rev. Melvin Clark
Hannah Cyr
Larry Dooley
Chris Gash
Pete Gilbert
Rev. Eddie Gray
Patsy Irvin
Melissa Jackson
Tom Martin
Katherine Panther Potemkin
Jonathan Rhodes
Sharon Robbs

Advisory Board

Mason Venable, *Chairman*
Monty Thornburg, *Secretary*
Mary Accor
Greg Blalock
Jesse Bone
Honorable Forrest D. Bridges
David Brinkley
Tom Brooks
Cecil Burton
Wade Carpenter
David Cline
Gary Gold
Connie Greene
Jennipher Harrill
Kitty Hoyle
Dr. Jane King
Tyler Leonhardt
Brenda Lovelace
Randy Mach
Tom McNichol
Sarah Nestlerode
Ellis Noell
David Pharr
Jay Rhodes
Dr. Mike Ribadeneyra
Gary Ritchie
Phillis Robinson
Bob Smith
John Still
Chris Turner
John Turner
Oscar Zamora

Life Enrichment Center
110 Life Enrichment Blvd.
Shelby, North Carolina 28150

Address Service Requested



This institution is an equal opportunity provider/employer.

Non-Profit Organization
U.S. Postage
PAID
Charlotte, NC
Permit #4106

Important Announcements

Life Enrichment Center will be CLOSED
Friday, April 2, 2021

In Memory:

The following have been remembered with a gift to Life Enrichment Center

Susan Coiner

by

Rich Coiner

Bruce Rabon

by

Diane Rabon

Howard S. Wright

by

Beth Gilstrap

Friends:

The following has given a gift to Life Enrichment Center

Heather Bridges Moore

Participant Cathy says thank you!



Thank You!

Otho West & family- Personal Care Items
Denise Allen- Bingo Prizes
Betty Buck- Lace Dolls
Holly & Paul Godfry- Magazines
Mt. Sinai Baptist- Birthday Party Snacks & Gifts
Mr. & Mrs. Lacy- Girl Scout Cookies
Debbie Vaughan- Coffee Filters
Richard Coiner- Magazines
Julia Smith- Walkers

